

ALL FIELDS DETAIL



MLS #	32544	BEDROOMS	FOUR
Asking Price	\$145,000	TOTAL BATH	THREE
Status Comment	Price Reduced	GARAGE CAPACITY	TWO
Status	BACK ON MARKET	GARAGE TYPE	ATTACHED
Class	RESIDENTIAL	STYLE	1 1/2
Type	SINGLE FAMILY	SQ. FT. ABOVE GROUND	2001-2300
Area	BASSETT	APPROX. AGE	61+
Address	201 E Florence	BASEMENT	YES
City	Bassett	WATERFRONT	NONE
State	NE	AUCTION	NO
Zip	68714	Marketing Comments	Open Floor Plan, Orig. Hardwood Floors & More!
Sale/Rent	For Sale		
IDX Include	Y		



GENERAL

VOW Include	Yes	VOW Address	Yes
VOW Comment	Yes	VOW AVM	Yes
Agent	Stacey Stracke - Cell: 402-340-2990	Listing Office 1	Stracke Realty, LLC - Off: 402-340-2990
Listing Date	5/16/2023	YEAR BUILT	1950
LOT SIZE	8625	ELEMENTARY SCHOOL	Bassett
JR. HIGH SCHOOL	Bassett	SENIOR HIGH SCHOOL	Rock County
Baths: Upper	1	Baths: Main	1
Baths: Basement	1	Bedroom: Upper	2
Bedroom: Main	2	Apprx. Sq. Ft: Upper	656
Apprx. Sq. Ft: Main	1648	Apprx. Sq. Ft: Grdn Lvl	0
Apprx. Sq. Ft: Basement	na	Apprx. Sq. Ft: % Finished	100
Apprx Sq Ft Above Ground	2304	Apprx Total Square Feet	2304
Living Room: Size	15x17	Living Room: Level	1
Dining Room: Size	15x16	Virtual Tour	Virtual Tour
Dining Room: Level	1	Kitchen: Size	11x17
Kitchen: Level	1	Mstr Bdrm: Size	17x14
Mstr Bdrm: Level	1	Bedroom 2: Size	9x14
Bedroom 2: Level	1	Bedroom 3: Size	24x11
Bedroom 3: Level	2	Bedroom 4: Size	10x11
Bedroom 4: Level	2	Description 1: DES	Breezeway
Description 1: SIZE	24x11	Description 1: LEVEL	1
Description 2: DES	FrontPorch	Description 2: SIZE	7x10
Description 2: LEVEL	1	Original Price	\$180,000
Associated Document Count	2	Sales Broker Compensation	Contact Office
Days On Market	234	Update Date	1/5/2024
Status Date	8/28/2023	Hotsheet Date	1/5/2024
Price Date	1/5/2024	Input Date	5/16/2023 4:11 PM
AVERAGE ELECTRIC	n/a	UTILITY REMARKS	city water/sewer/trash -\$96.61
Geocode Quality	Exact Match	Picture Count	54
Days On MLS	234	Input Date	5/16/2023 4:11 PM
Update Date	1/5/2024 9:19 AM	Video Count	0

FEATURES

LIVING ROOM WOOD	LAUNDRY BASEMENT	OTHER ROOMS MASTER BATH	STREET/ROAD PAVED
DINING ROOM LIV/DIN COMBO WOOD	BASEMENT PARTIAL	POSSESSION AT CLOSING	CITY MAINTAINED SIDEWALK
KITCHEN ELECTRIC RANGE DISHWASHER REFRIGERATOR EAT-IN VINYL ALL APPLIANCES INCL.	CONSTRUCTION FRAME HEATING/COOLING BASEBOARD CENTRAL AIR WINDOW AIR	UTILITIES CITY WATER CITY SEWER ELECTRICITY	LANDSCAPING ESTABLISHED YARD GOOD SHOWING INSTRUCTIONS CALL AGENT

FINANCIAL

PARCEL # 750002776
TAX YEAR 2022

TAXES 1660.28

REMARKS

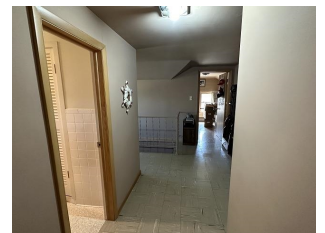
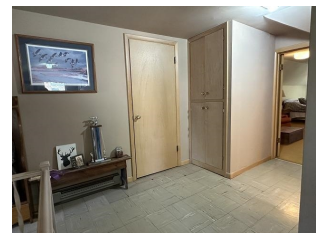
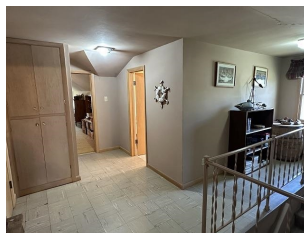
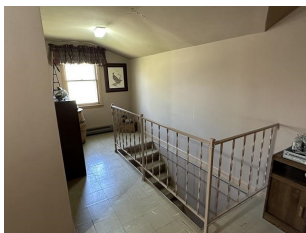
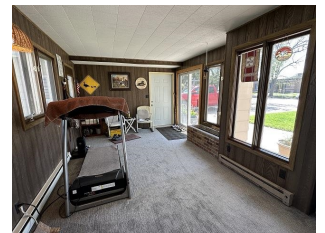
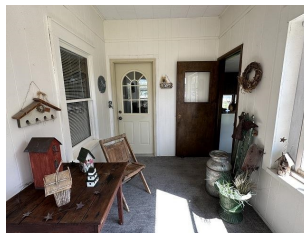
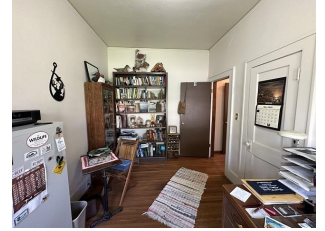
Remarks Charming 1950's open concept home, ready for you to make it your own! Established and well maintained yard, make it easy on the eyes as you pull up. This home has a great entry way, spacious and ready for your guests, or family to enter and put away their coats, shoes, etc. This homes floor plan is wonderful for entertaining, the entry way opens up to the shared living/dining room space. Enjoy the original hard wood floors and the large open windows letting lots of natural light in. Gather around in the eat

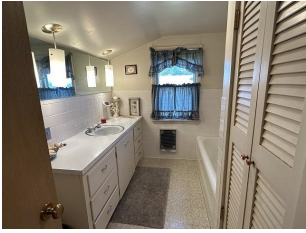
ADDENDUM

Addendum Charming 1950's open concept home, ready for you to make it your own! Established and well maintained yard, make it easy on the eyes as you pull up. This home has a great entry way, spacious and ready for your guests, or family to enter and put away their coats, shoes, etc. This homes floor plan is wonderful for entertaining, the entry way opens up to the shared living/dining room space. Enjoy the original hard wood floors and the large bay windows letting lots of natural light in. To step away from guests you'll find the master bedroom, office and bath on the main level. The master bedroom is gracious in size and will easily become your personal oasis. The office (second bedroom) has been well utilized but could easily be converted to use as a bedroom. The main bath has plenty of storage and offers a tub/shower combination. Back to your main living areas, you & your guests can gather around in the eat-in kitchen, where you will really appreciate the tall ceilings. What a lovely feature of this home. With plenty of storage space and a great working layout for the cook you'll all enjoy this kitchen. Another entry and breezeway to the garage enhance the ease of coming and goings from your home. These spaces offer lots of extra storage or a place to enjoy hobbies. Upstairs you'll find 2 more bedrooms and a full bathroom. Each bedroom is large in size and could easily become a favorite retreat, just add your personal items. The garage is a two car attached and can be entered through the breezeway of the home on the main level. Hard wood floors, open floor plan, eat in kitchen, extra spaces....enjoy this wonderful home!

ADDITIONAL PICTURES







DISCLAIMER

This information is deemed reliable, but not guaranteed. All measurements are approximate and should be verified. The listing broker's offer of compensation is made only to Participants of the MLS where the listing is filed.